

VMAX® IP G4™ 12CH - Connecting 9 or more cameras

This document outlines how to connect nine (9) or more IP cameras to a 12-channel VMAX IP G4 NVR using a PoE Switch.

With local DHCP server present

1. Connect the NVR WAN port to the available LAN port on the router.
2. Connect the PoE switch to the available LAN port on the router.
3. Connect the cameras to the PoE switch.

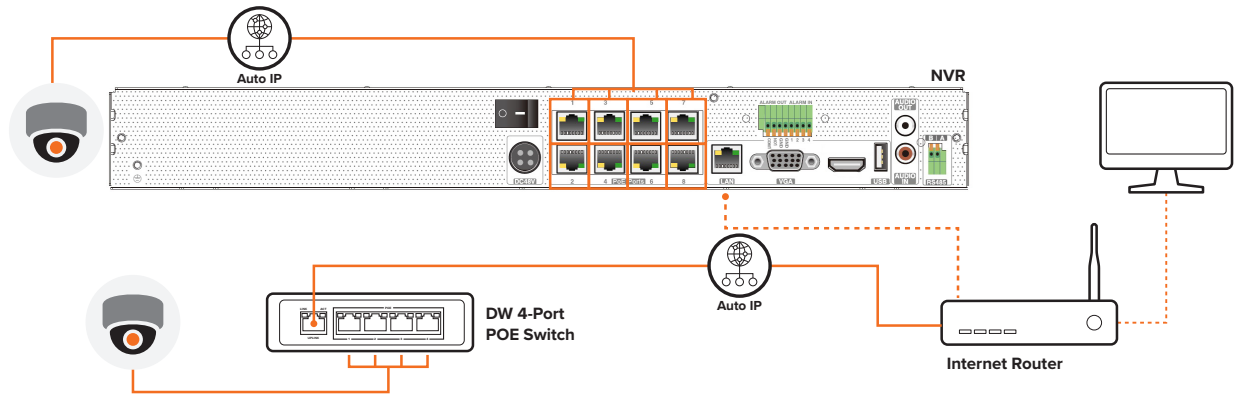


Figure 1. Connecting up to 12 IP cameras with a 4-port POE Switch.

VMAX® IP G4™ 16CH - Connecting with PoE Switch

This document outlines how to connect IP cameras to a 16-channel VMAX IP G4 NVR using a PoE Switch.

With local DHCP server present

1. Connect the NVR WAN port to the available LAN port on the router.
2. Connect the PoE switch to the available LAN port on the router.
3. Connect the cameras to the PoE switch.

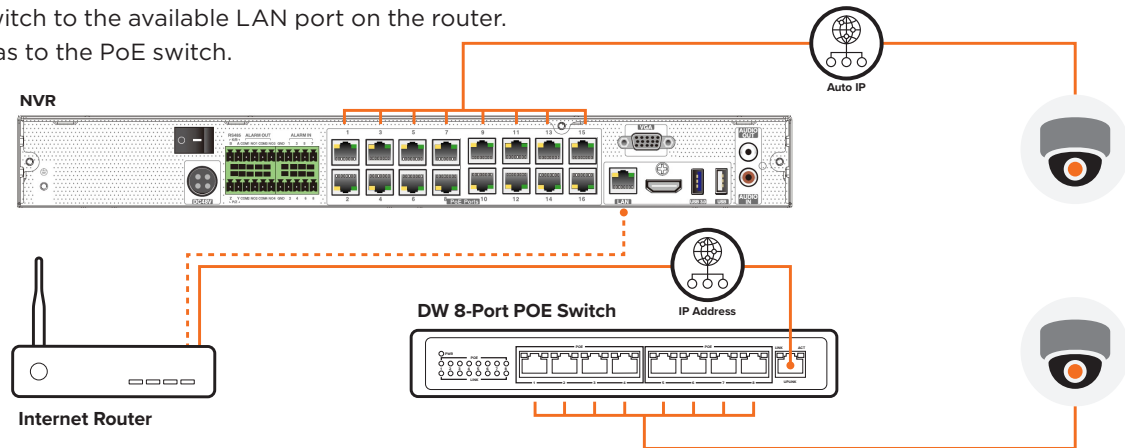


Figure 2. Connecting IP cameras with DW 8-Port POE Switch



Increase sales and profitability. Sign up and become a DW Channel Partner today!



☎ : 866.446.3595

✉ : sales@digital-watchdog.com

🌐 : www.digital-watchdog.com

